

PLAN AHEAD

Confirm



Check Weather



No Pets

Report Your Cleanup Results

Thank you for being part of the solution to end littering in Tennessee!



How do I receive my patch?

Once you have completed a cleanup and submitted the cleanup report form, your patch can be requested by calling us at 800-474-1912 or by sending us an email at info@girlscoutcsa.org.

NOBODY TRASHES TENNESSEE
TENNESSEE DEPARTMENT OF TRANSPORTATION

Cleanup Orientation

girl scouts
of southern
appalachians



NOBODY TRASHES TENNESSEE
TENNESSEE DEPARTMENT OF TRANSPORTATION

PLAN AHEAD

What to Wear

Protective Clothing, Bright Colors

Long Sleeves



Pants



Sturdy, Closed-Toed Shoes



What to Bring

Gloves



Sun Gear/Sunscreen



Bug Spray



Water Bottle



Snack



Emergency Contact Numbers



Emergency Medications and First Aid Kit



Extra Clothing



AT THE EVENT

When you get there:

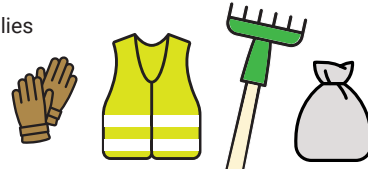
Check in with organizers and attend safety tailgate meeting



Learn where to:

- Reach a team leader
- Pick up litter
- Not trespass
- Put collected items
- Park/carpool

Get supplies



Litter Pickup Safety

Work with 5 Girl Scouts per leader



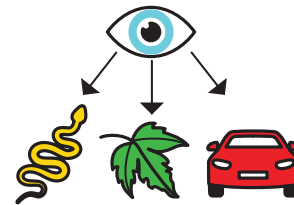
No earbuds or headphones



Use common sense about lifting heavy objects. Get help!



Carefully handle sharp objects, aerosol cans, and chemical containers



Be aware of your surroundings. Watch for:

- Snakes, wasps and other pests in debris piles
- Poison ivy & oak, unstable rocks, thorns, brambles
- Broken glass
- Oncoming vehicles

PICKING UP LITTER

Do not pick up litter:

On bridges, in tunnels, medians, overpasses or directly on roads



Notify your coordinator:

- Toxins, poison, explosives, harmful or corrosive materials
- Human or medical waste
- Drug or drug waste
- Weapons
- Cannot identify
- Worried about safety



PUT IN BAGS

- Paper
- Cardboard
- Plastic
- Styrofoam
- Wood
- Rubber
- Glass
- Metal
- Empty bottles, cans and cups (Do not remove lids or empty liquids)

DO NOT PUT IN BAGS

Items that are:

- Large
- Heavy
- Sharp
- Dead animals
- Drum-like containers

WHEN IN DOUBT, LEAVE IT OUT.

When You're Done



Report littered hot spots



Put collected items in designated place



Return cleanup supplies



Sanitize or wash hands



Post event photos and experiences to social media