

## PLAN AHEAD

### Confirm



### Check Weather



No Pets

## Report your cleanup results

Thank you for being a part of the solution to end littering in Tennessee!



## How do I receive my patch?

Once you have completed a cleanup and submitted the cleanup report form, you will receive a confirmation email.

Patches can be picked up at the council office at 129 Boone Ridge Drive, Johnson City, TN 37615

**NOBODY TRASHES TENNESSEE**  
TENNESSEE DEPARTMENT OF TRANSPORTATION

## Cleanup Orientation



BOY SCOUTS OF AMERICA  
SEQUOYAH COUNCIL



**NOBODY TRASHES TENNESSEE**  
TENNESSEE DEPARTMENT OF TRANSPORTATION

# PLAN AHEAD

## What to Wear

### Protective Clothing, Bright Colors

Long Sleeves



Pants



Sturdy, Closed-Toed Shoes



## What to Bring

Gloves



Sun Gear/Sunscreen



Bug Spray



Water Bottle



Snack



Emergency Contact Numbers



Emergency Medications and First Aid Kit



Extra Clothing



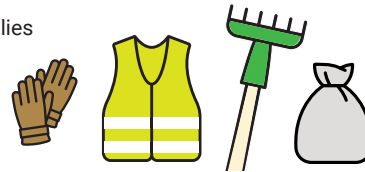
# AT THE EVENT

## When you get there:

Check in with organizers and attend safety tailgate meeting



Get supplies



## Learn where to:

- Reach a team leader
- Pick up litter
- Not trespass
- Put collected items
- Park/carpool



## Litter Pickup Safety

Please make sure you meet minimum leadership requirements.



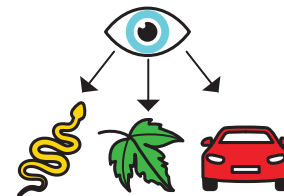
No earbuds or headphones



Use common sense about lifting heavy objects. Get help!



Carefully handle sharp objects, aerosol cans, and chemical containers



Be aware of your surroundings. Watch for:

- Snakes, wasps and other pests in debris piles
- Poison ivy & oak, unstable rocks, thorns, brambles
- Broken glass
- Oncoming vehicles

# PICKING UP LITTER

## Do not pick up litter:

On bridges, in tunnels, medians, overpasses or directly on roads



## Notify your coordinator:

- Toxins, poison, explosives, harmful or corrosive materials
- Human or medical waste
- Drug or drug waste
- Weapons
- Cannot identify
- Worried about safety



## PUT IN BAGS

- Paper
- Cardboard
- Plastic
- Styrofoam
- Wood
- Rubber
- Glass
- Metal
- Empty bottles, cans and cups (Do not remove lids or empty liquids)

## DO NOT PUT IN BAGS

Items that are:

- Large
- Heavy
- Sharp
- Dead animals
- Drum-like containers

WHEN IN DOUBT, LEAVE IT OUT.

## When You're Done



Report littered hot spots



Put collected items in designated place



Return cleanup supplies



Sanitize or wash hands



Post event photos and experiences to social media